

Jasper Industrial Park

Walker County



Location:	Jasper	Electric:	Alabama Power
Total Park:	405 acres	Gas:	Alabama Gas 2" Main
Developed:	50 acres	Water:	Jasper Water 8" Main
Level:	50 acres	Sewer:	Jasper Sewer 10" Main
Remaining:	355 Total	Price:	\$30,000 / Acre Graded
Rail:	BN Rail		
Zoning:	Industrial		
Covenants:	Yes		

ALABAMA

Contact:

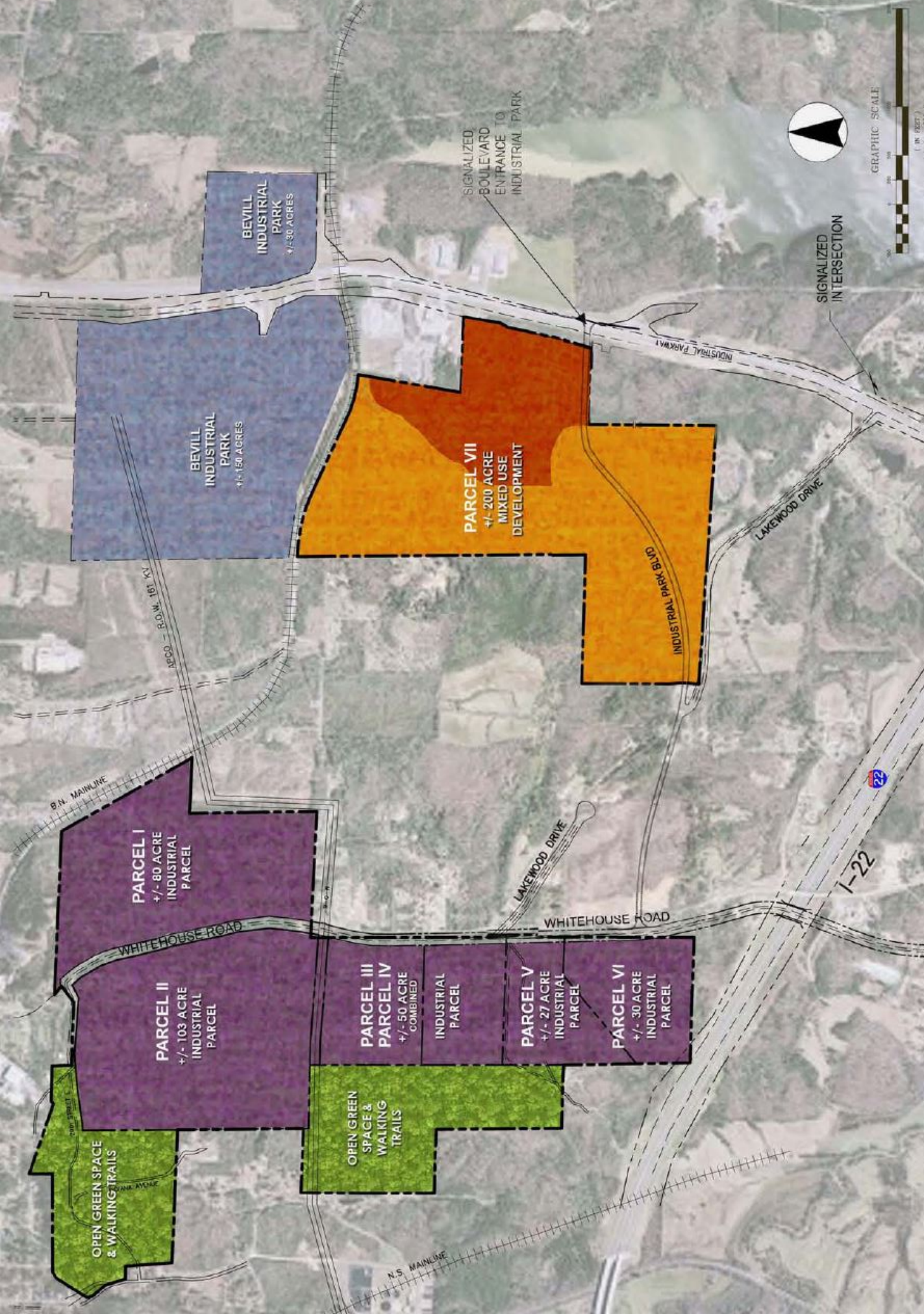
Walker County Development Authority

P.O. Box 1448 Jasper, Alabama 35502

Phone: 205-302-0068

Fax: 205-387-0980

Web Address: wceida.com



OPEN GREEN SPACE & WALKING TRAILS

OPEN GREEN SPACE & WALKING TRAILS

PARCEL I
+/- 80 ACRE INDUSTRIAL PARCEL

PARCEL II
+/- 103 ACRE INDUSTRIAL PARCEL

BEVILL INDUSTRIAL PARK
+/- 150 ACRES

BEVILL INDUSTRIAL PARK
+/- 30 ACRES

**PARCEL III
PARCEL IV**
+/- 50 ACRE COMBINED INDUSTRIAL PARCEL

PARCEL V
+/- 27 ACRE INDUSTRIAL PARCEL

PARCEL VI
+/- 30 ACRE INDUSTRIAL PARCEL

PARCEL VII
+/- 200 ACRE MIXED USE DEVELOPMENT

SIGNALIZED BOULEVARD ENTRANCE TO INDUSTRIAL PARK

SIGNALIZED INTERSECTION



B.N. MAINLINE

R200 - R.O.W. 161' KY

LAKWOOD DRIVE

WHITEHOUSE ROAD

INDUSTRIAL PARKWAY

LAKWOOD DRIVE

I-22

N.S. MAINLINE